

# Door panel and door hinge left and right adjustment instructions

## Freezing door panel change

### 1. Door panel removal

#### ①. Remove the three screws

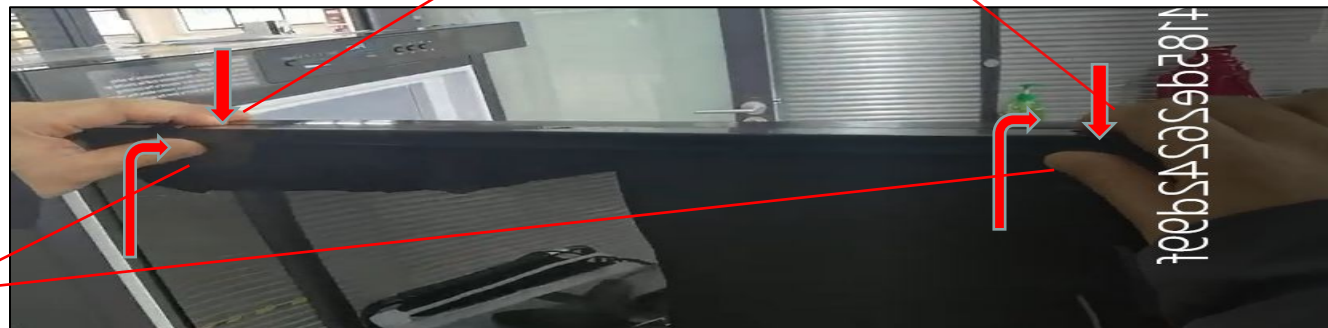


#### ②. Take out the door frame strip



Hold down

Push up



# Door panel and door hinge left and right adjustment instructions

## Freezing door panel change

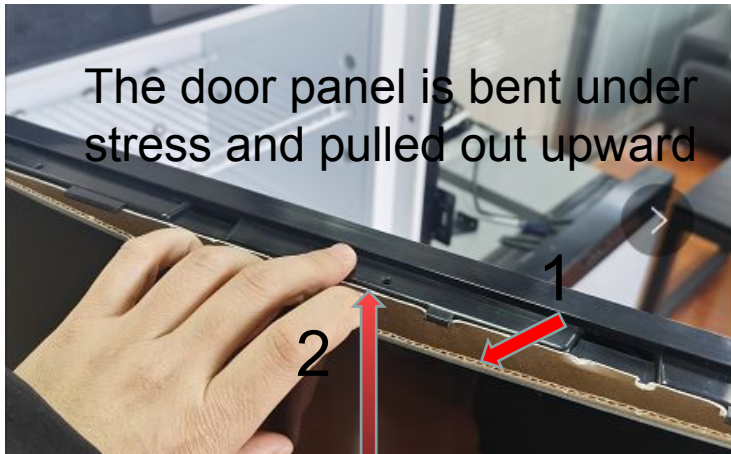
Clamping position of  
door frame strip



③. Pull out the door panel



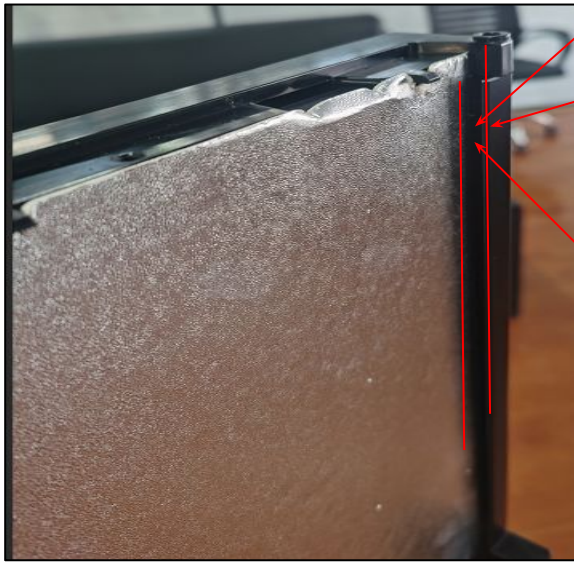
Appearance after the door panel  
taken out



# Door panel and door hinge left and right adjustment instructions

Freezing door panel replacement

2.Door panel installation



①.Bend the door panel and then insert into the Limit slot

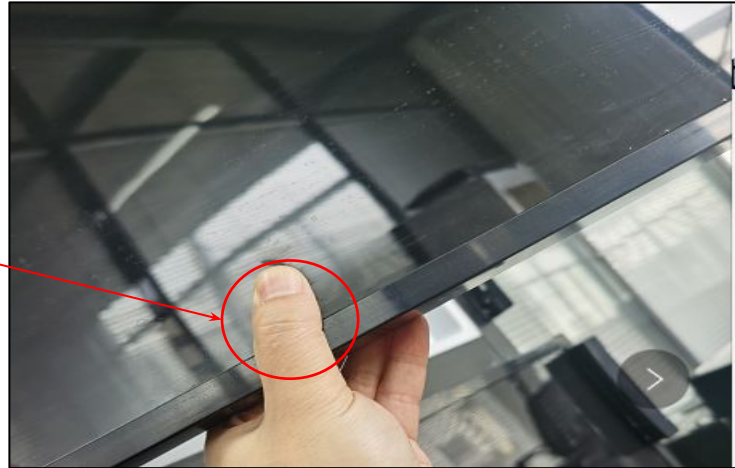


# Door panel and door hinge left and right adjustment instructions

## Freezing door panel replacement

### 2. Door panel installation

②. Press the door panel so that the bottom of the door panel enters the limit slot



③. Put the door frame strip into the clamping position obliquely and press it tightly

④. Install 3 screws





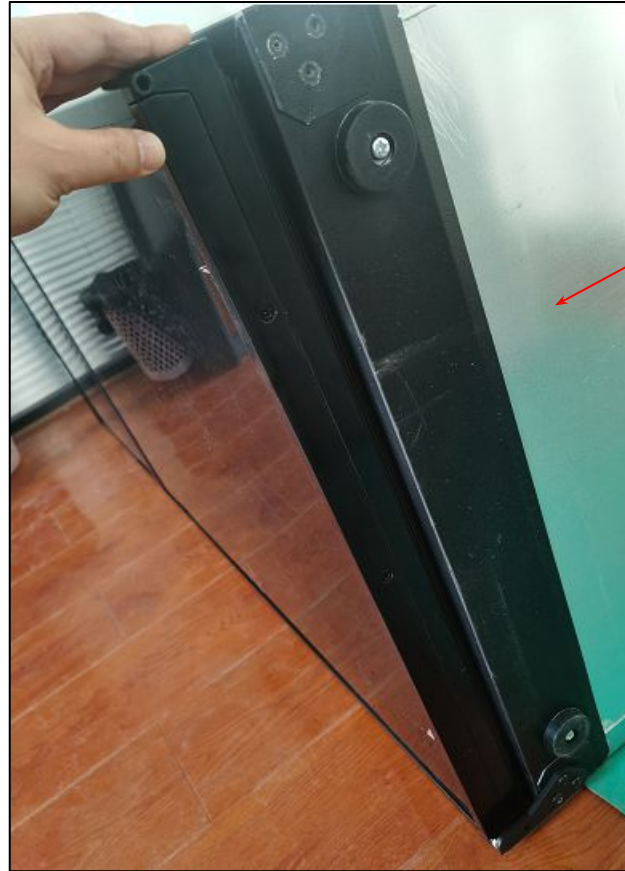
# Door panel and door hinge left and right adjustment instructions

## Refrigeration door panel replacement

### 1. Door panel removal

①. Turn the refrigerator upside down and take out 3 screws from the bottom of the refrigerator door

②. The remaining steps are the same as the freezing door panel



Bottom of refrigerator

# Door panel and door hinge left and right adjustment instructions

## Door hinge direction change

1. Door disassembly

①. Remove the 2 screws



②. Remove the display panel



# Door panel and door hinge left and right adjustment instructions

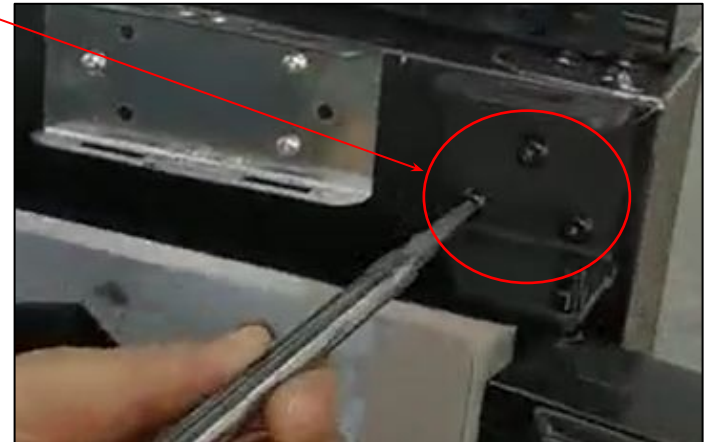
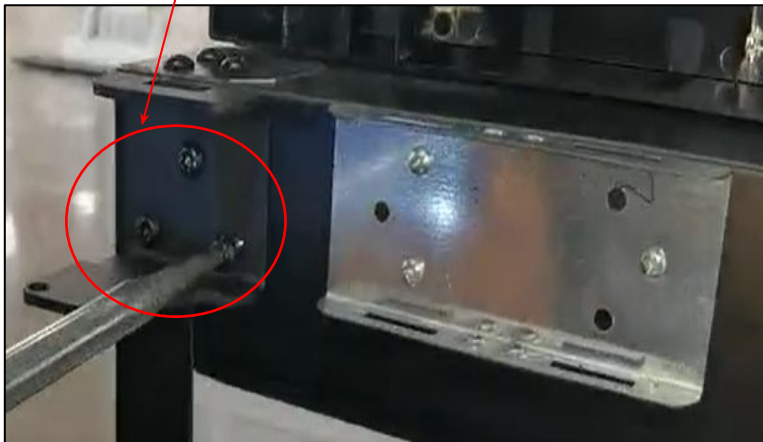
## Door hinge direction change

2.Remove the upper hinge

①.Remove the top hinge screws



When removing the last screw, another person needs to grasp the door to prevent it from falling



# Door panel and door hinge left and right adjustment instructions

## Door hinge direction change

3.Remove the top hinge and lift the rear door up and out





# Door panel and door hinge left and right adjustment instructions

## Door hinge direction change

4. Open the refrigeration door 170 degrees, and then take out the two screws of the middle hinge

When removing the last screw, another person needs to grasp the door to prevent it from falling



# Door panel and door hinge left and right adjustment instructions

## Door hinge direction change

5.Remove the middle hinge and lift the refrigerator door up and out

6.Turn the refrigerator upside down and remove the bottom hinge screws



# Door panel and door hinge left and right adjustment instructions

## Door hinge direction change

7.Remove the bottom hinge rotation shaft



8.After turning the bottom hinge plane 180 degrees, reinstall the removed rotating shaft on the hinge



# Door panel and door hinge left and right adjustment instructions

## Door hinge direction change

10. Install the lower hinge by reinstalling the rotating shaft on the other side of the bottom of the refrigerator



11. Restore the refrigerator to normal upright position



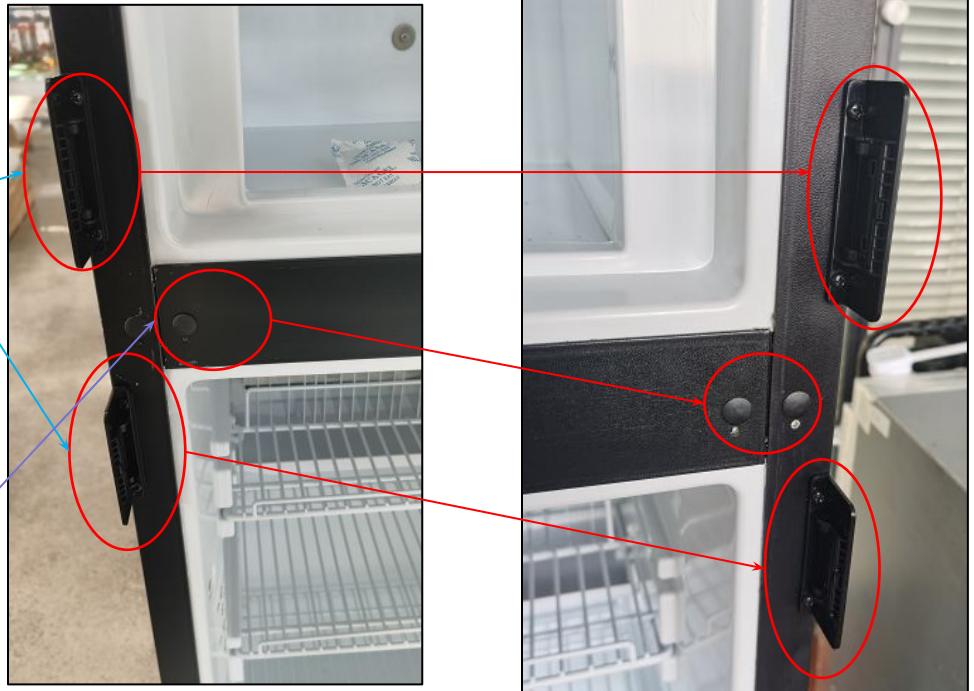


# Door panel and door hinge left and right adjustment instructions

## Door hinge direction change

12. Remove the screws of the door buckle seat, turn the door buckle seat 180 degrees and fix it with screws

13. Take out the screw hole plug and install it in the screw hole on the other side



# Door panel and door hinge left and right adjustment instructions

## Door hinge direction change

14. Install the refrigeration door, and align the hole at the bottom of the refrigeration door with the rotating shaft of the lower hinge



15. Take out a new hinge base from the plastic bag



16. Remove the right middle hinge rotating shaft



# Door panel and door hinge left and right adjustment instructions

## Door hinge direction change

17. Install the removed rotating shaft on the new middle hinge base taken out from the plastic bag



18. Align the rotating shaft with the mounting hole of the refrigeration door, open the door 170 degrees, and fix the middle hinge seat with 2 screws



# Door panel and door hinge left and right adjustment instructions

## Door hinge direction change

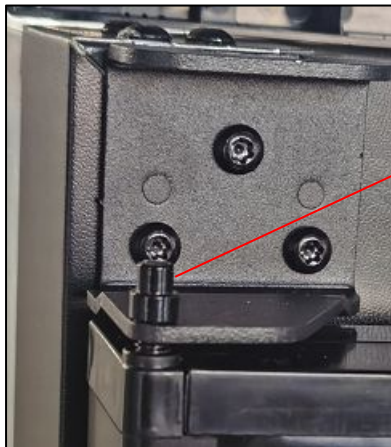
19. Align the mounting hole at the bottom of the freezing door with the hinge rotation shaft and put it in



20. Remove the top right hinge rotating shaft and install it on the top left hinge base



Both hinge seats at the top need to be installed, and there is no rotating shaft on one side





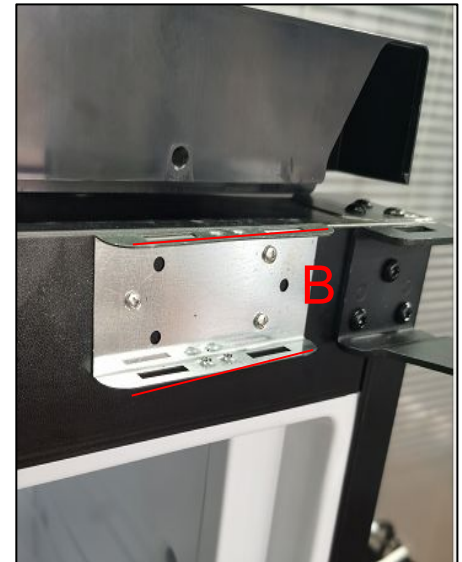
# Door panel and door hinge left and right adjustment instructions

## Door hinge direction change

21. The freezer door is opened more than 90 degrees



22. The display panel opening A is inserted into the following structure B and the top hinge base



# Door panel and door hinge left and right adjustment instructions

## Door hinge direction change

23. The picture on the right shows the state of completing insertion. Both sides need to be checked



24. Secure the display panel at the bottom with two screws



# Door panel and door hinge left and right adjustment instructions

## Removal and installation of buckle

1. Use a slotted screwdriver to push up the rotating axial direction of the spring section

2. Pull the handle outward after the rotating shaft is separated from the mounting hole

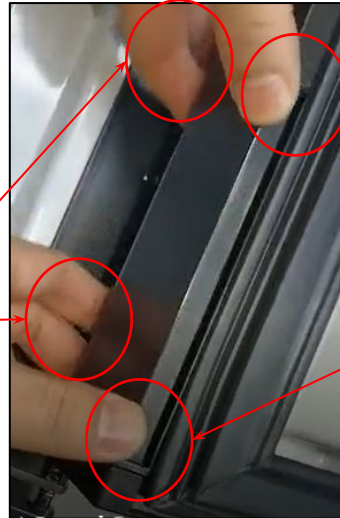


# Door panel and door hinge left and right adjustment instructions

## Removal and installation of buckle

3. Press and hold with your fingers according to the right picture, and pull the other side outward

Pull outward



Press and hold

Clamping position

4. Press down with your hand and pull outward





# Door panel and door hinge left and right adjustment instructions

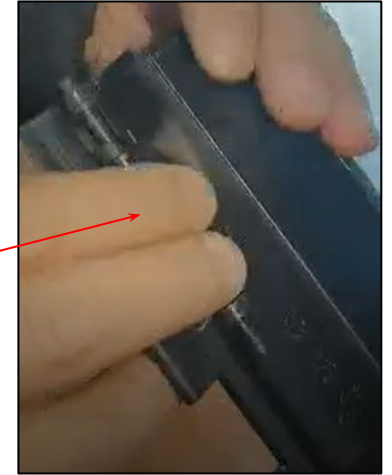
## Removal and installation of buckle

5. Pull the spring outward

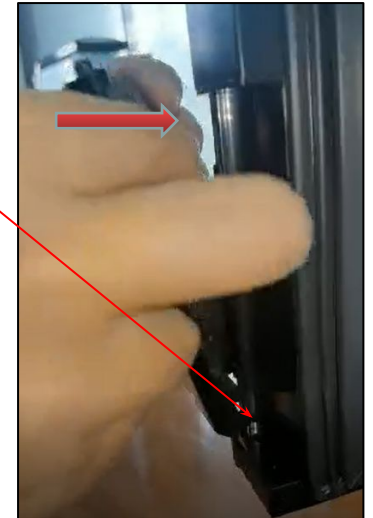
6. Align the rotating shaft with the door buckle mounting hole

7. Press and hold the spring and push it inward. The rotating shaft on the spring side presses against the end face of the door and releases the spring

8. Then move the buckle so that the rotating shaft enters the mounting hole



Rotation axis



# Door panel and door hinge left and right adjustment instructions

## Removal and installation of buckle

9. Put the red circle marked bump in the right picture into the groove

10. Press down and push in laterally

11. Push firmly in the direction of the arrow

